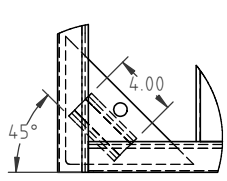
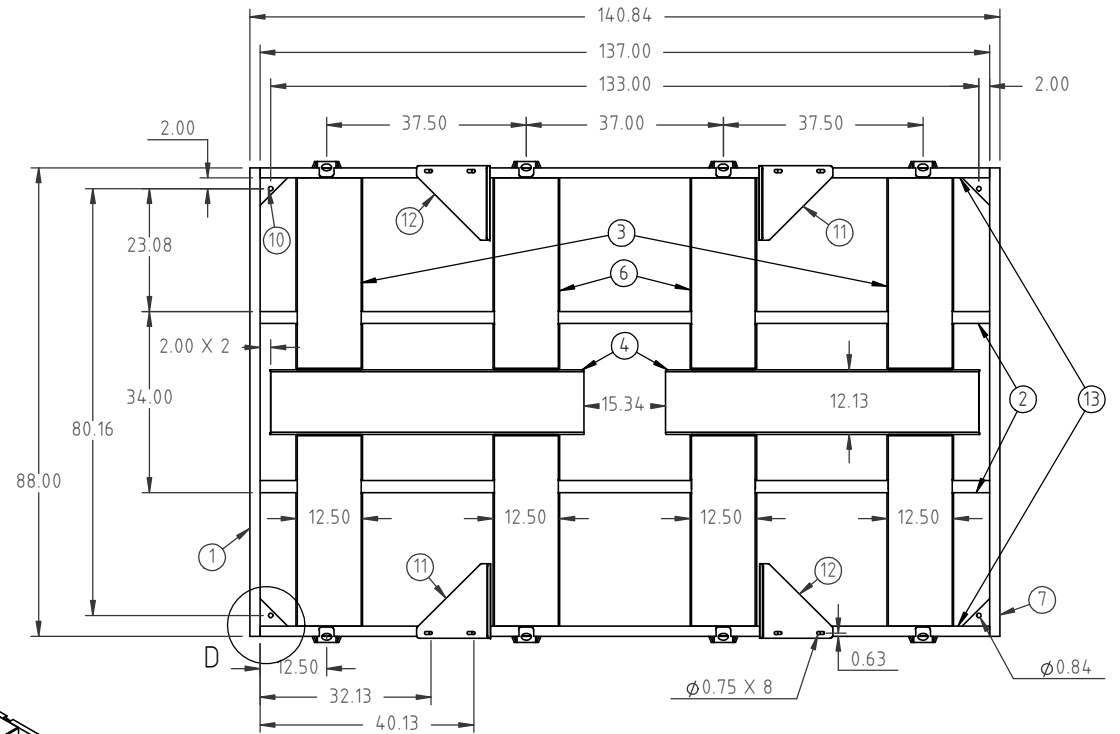
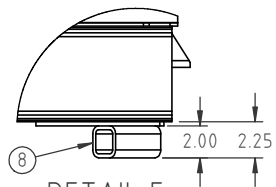
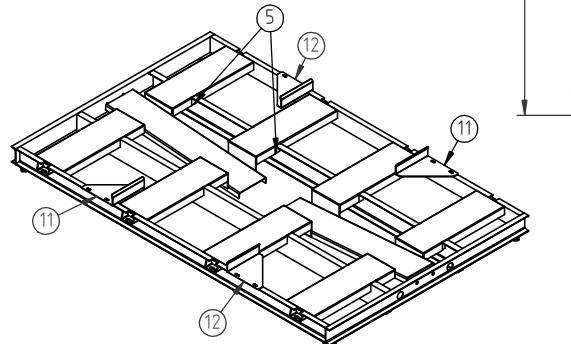


Copyright. All information furnished within this document, electronic file or design correspondence is the property of Den Hartog industries, Inc. and shall not be used, disclosed to others or copied without the expressed written consent of Den Hartog Industries, Inc.

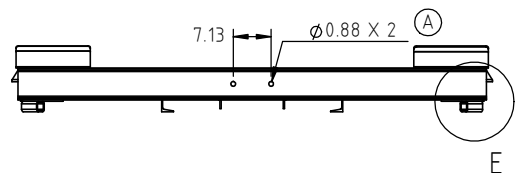
| KEY | PART NUMBER | DESCRIPTION | QTY. |
|-----|-------------------|-----------------------------|------|
| 1 | FS2350/3250-SK-1 | END CHANNEL | 1 |
| 2 | FM2350/3250-SK-2 | INNER CHANNEL | 2 |
| 3 | FM2350/3250-SK-3 | FORMED SUPPORT CHANNEL | 4 |
| 4 | FM2350/3250-SK-4 | INNER FORMED CHANNEL | 2 |
| 5 | FS2350/3250-SK-5 | FILLER PLATE | 16 |
| 6 | FM2350/3250-SK-6 | FORMED SUPPORT CHANNEL-LONG | 4 |
| 7 | FM2350/3250-SK-7 | END CHANNEL-HOLES | 1 |
| 8 | FM2350/3250-SK-8 | BASE SUPPORT TUBE | 4 |
| 9 | SJ19121 | BRACKET | 8 |
| 10 | 12847 | 8" X 8" GUSSET | 4 |
| 11 | FS10026 | RETAINING PLATE-RIGHT | 2 |
| 12 | FS10027 | RETAINING PLATE-LEFT | 2 |
| 13 | FS2350/3250-SK-12 | OUTER CHANNEL | 2 |



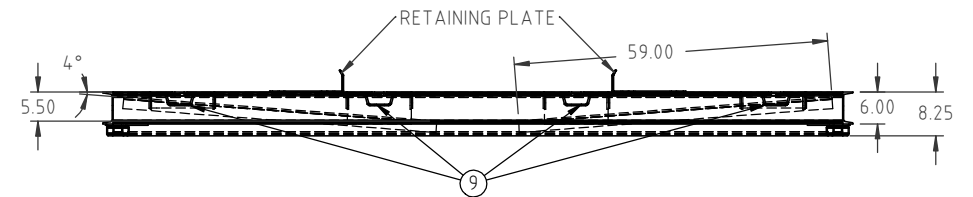
DETAIL D
SCALE 1 : 12



DETAIL E
SCALE 1 : 12



E



| | | | | | |
|---|----------------------------|---|------|------------------------------|----------|
| | | | | DRAWN / DATE ADH 4/23/10 | MATERIAL |
| A | POWDER COATING HOLES ADDED | ADH 8/2/12 | 2465 | APPRD. / DATE REH 5/12/10 | |
| REV | DESCRIPTION | BY / DATE | CCN | | |
| ALL DIMENSIONS ARE IN DECIMAL INCHES TOLERANCES UNLESS OTHERWISE SPECIFIED | | THIRD ANGLE PROJECTION ANSI 14.5M | | SHOT WEIGHT: | NOTES: |
| POLYETHYLENE | | METAL DECIMAL ± .125" FRACTION ± 1/4" ANGLE ± 1° | | SHIPPING WEIGHT: 1060 LB. | |
| ±1% @ 68°F | | | | FINISH: BLACK POWDER COAT | |



Den Hartog
INDUSTRIES, INC.

Acu Roto-Mold Injection Molding Blow Molding Sowjoy

4010 HOSPERS DRIVE S. BOX 425, HOSPERS, IOWA 51238-0425

| | |
|--|-----------------------------|
| DESCRIPTION SKID FOR 2350 & 2750 & 3250 LEG TANK-CENTER DRAIN | |
| SCALE N.S. | PART NO. FM2350/3250-SKC |