

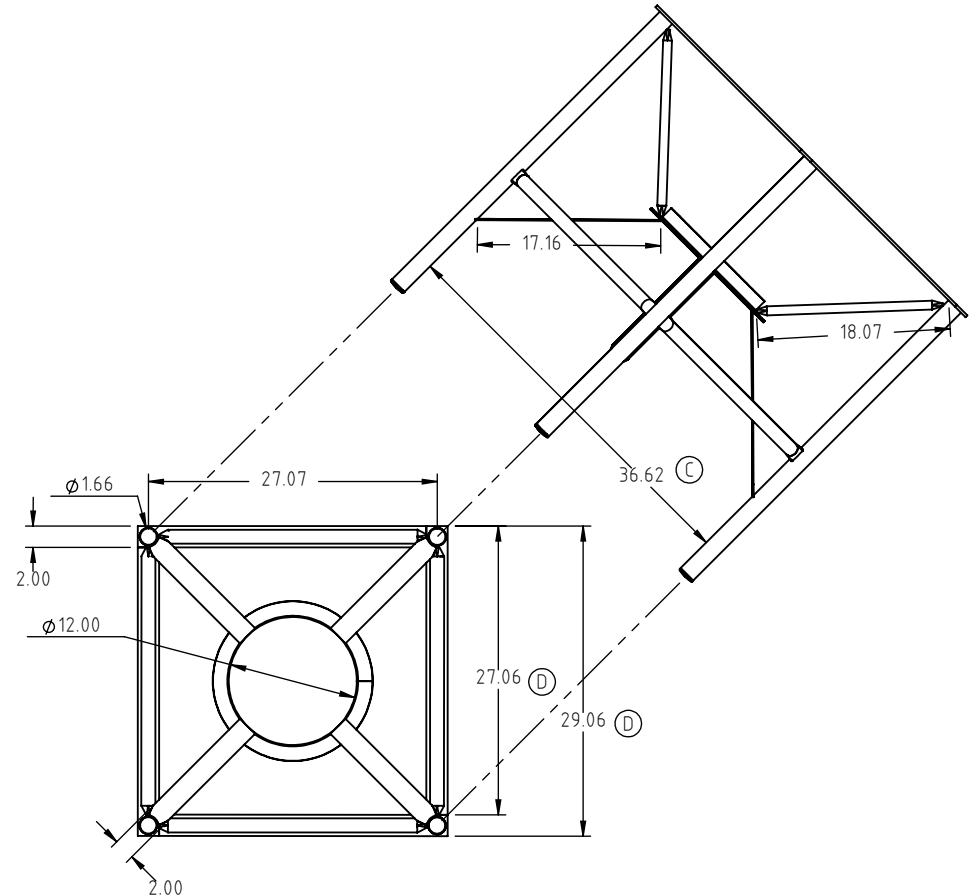
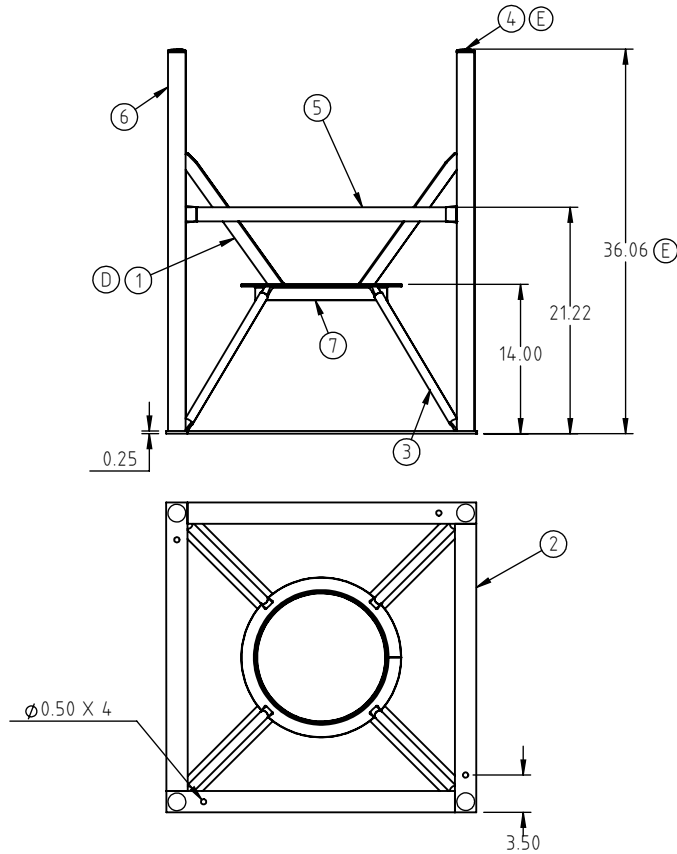
© DEN HARTOG INDUSTRIES, INC.

Copyright. All information furnished within this document, electronic file or design correspondence is the property of Den Hartog Industries, Inc. and shall not be used, disclosed to others or copied without the expressed written consent of Den Hartog Industries, Inc.

KEY	PART NUMBER	MATERIAL	DESCRIPTION	QTY.
1	CB036-45ST-1	S-2500	SHEET, 1/4" MILD STEEL	4 @ 17 3/8 X 2 IN (139 SI)
2	CB036-45ST-2	B02500X20000	1/4 X 2 FLAT	4 @ 27 1/16 IN (108.25 IN)
3	CB036-45ST-3	P05000	1/2" SIZE TUBING	4 @ 17 1/2 IN (70 IN)
4	12686	62202	1-1/2" PIPE PLUG	4
5	CB036-45ST-5	T1000X01090	1" OD ROUND MILD X .109 WALL	4 @ 25 3/8 IN (101.5 IN)
6	CB036-45ST-6	T1660X01090	1.66 RD MILD X .109 WALL	4 @ 35 1/2 IN (142 IN)
7	RAR-12	RAR-12	12" ROLLED ANGLE	1

CB036-45ST

E



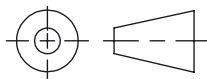
E	12686 PLUG WAS CB036-45ST-4, 36.06 WAS 36.00	ADH 6/16/09	1888
D	SUPPORT STRAP DESIGN MODIFIED PRINT DIMENSIONS UPDATED	ADH 2/6/09	1797
C	INCREASE LEG SPACING CCN1340	DHJ 5/22/07	
B	TOLERANCE WAS 1% @ 68°F	GWC 3/8/07	
A	ADDED HOLE SPACING DIMS AND BOM	NVE 5/15/06	
REV	DESCRIPTION	BY / DATE	CCN

DRAWN / DATE	MATERIAL
ADH 6/28/07	
APPRD. / DATE	
REH 7/12/07	

ALL DIMENSIONS ARE IN DECIMAL INCHES  
TOLERANCES UNLESS OTHERWISE SPECIFIED

POLYETHYLENE	METAL
±1% @ 68°F	DECIMAL ± .125" FRACTION ± 1/4" ANGLE ± 1°

THIRD ANGLE PROJECTION  
ANSI 14.5M



SHOT WEIGHT:	NOTES:
SHIPPING WEIGHT:	
FINISH:	



**Den Hartog**  
INDUSTRIES, INC.

Ace Roto-Mold Injection Molding Blow Molding Sowjoy

4010 HOSPERS DRIVE S. BOX 425, HOSPERS, IOWA 51238-0421

DESCRIPTION	STAND FOR 45° 150 GALLON CONE BOTTOM TANK	
SCALE	N.S.	PART NO. CB036-45ST