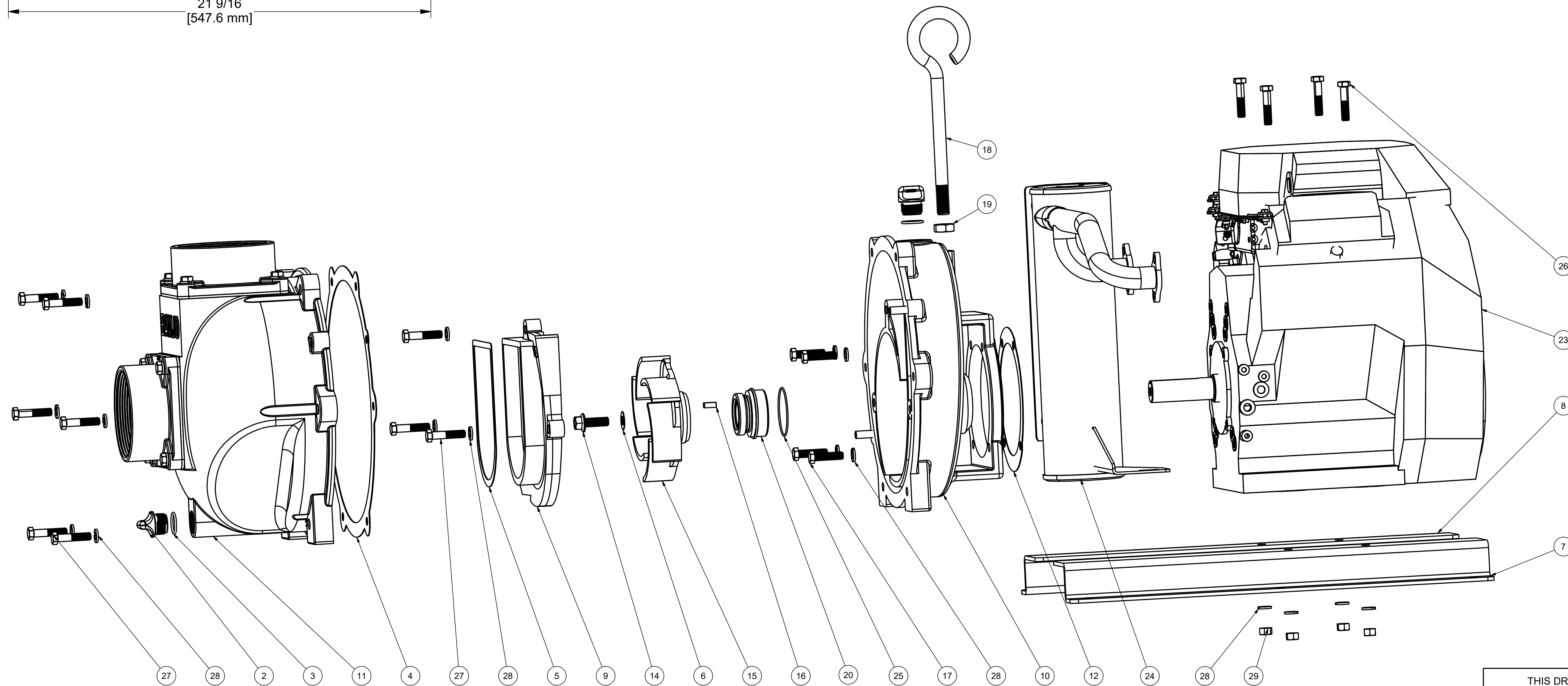


Parts List			
ITEM	QTY	PART NUMBER	DESCRIPTION
1	1	12910	PUMP DECAL (N/S)
2	2	13777	3/4" DRAIN PLUG
3	2	13778	AS568A -119 O-RING, EPDM, BLACK
4	1	16019 (A)	GASKET
5	1	16019 (B)	GASKET
6	1	16019 (C)	GASKET
7	1	16033A	Z-RAIL
8	1	16033B	Z-RAIL
9	1	16702	4" PUMP VOLUTE
10	1	16707	4" PUMP REAR BRACKET ASSY
11	1	16712	4" PUMP BODY ASSY
12	1	16751	GASKET SHIM SET
13	1	16752	IMPELLER SHIM (N/S), AS NEEDED
14	1	16765	7/16-20 1 1/4" HFS
15	1	16775	6 VANE IMPELLER FOR 4" PUMP
16	1	16901	1/4" SQ. X 3/4" KEY
17	4	18027	3/8-16 X 1 1/2" HHCS
18	1	18033	PUMP HANDLE
19	1	18034	5/8-11 JAM NUT
20	1	18435	4" PUMP MECH. SEAL ASSY
21	30"	E20FL	1/4" CARB/EPA FUEL LINE (N/S)
22	1	E20T	FUEL TANK (N/S)
23	1	E24H	HONDA GX690
24	1	MUF0497R	MUFFLER FOR 690 HONDA
25	1	V10264	#36 O'RING
26	4	V20011	3/8-16 X 1 3/4" HHCS
27	9	V20011SS	3/8-16 X 1 3/4" HHCS
28	17	V20018	3/8" LOCKWASHER
29	4	V20019	3/8" HEX NUT



THIS DRAWING AND ALL INFORMATION CONTAINED THEREON ARE THE EXCLUSIVE PROPERTY OF BANJO CORPORATION.

UNLESS SPECIFICALLY NOTED, THIS DRAWING AND ITEMS SHOWN ON THIS DRAWING ARE SUBJECT TO CHANGE AT ANY TIME.

BANJO CORPORATION
150 BANJO DRIVE, CRAWFORDSVILLE, IN 47933
WEB SITE: WWW.BANJO.CORP.COM
E-MAIL: BANJOSALES@DEXCORP.COM

DESCRIPTION
4" CI PUMP W/ 24HP HONDA ENGINE

PART NUMBER
444PIH24