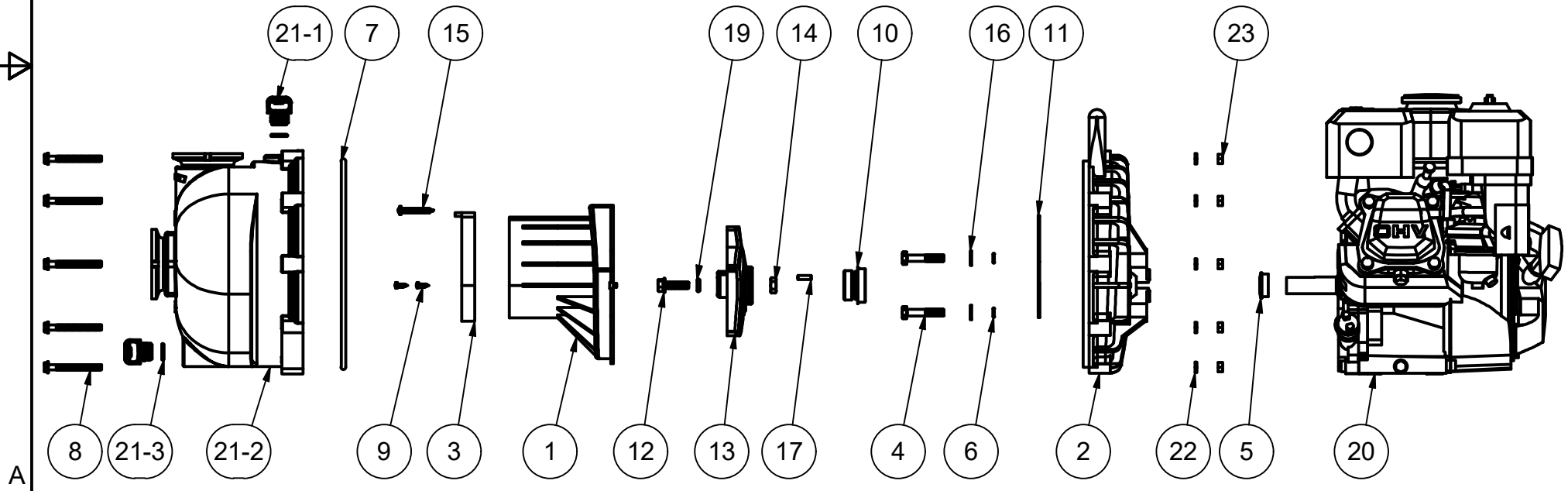



PARTS LIST			
ITEM	QTY	PART NUMBER	DESCRIPTION
1	1	12702A	2" POLY PUMP VOLUTE
2	1	12703A	POLY PUMP REAR BRACKET
3	1	12705	PUMP CHECKVALVE, EPDM
4	4	12715A	5/16-24 X 1 3/4" HHCS WITH TORQ-PATCH
5	1	12716	PUMP SLINGER
6	4	12717	AS568A -011 O-RING, EPDM
7	1	12719A	AS568A -375 O-RING, EPDM, BLACK
8	10	12720	1/4-20 X 2 1/2" SL IND HWHS
9	2	12725	#6 X 1/2" PPH SMS
10	1	12733	MECHANICAL SEAL ASSY
11	1	12754	O'RING SEGMENT
12	1	12765A	5/16-24 X 1 1/8" HFS
13	1	12772	IMPELLER
14	1	12775A	7/16-14 HEX NUT
15	1	12900	#10 X 1 1/2" PPH SMS
16	4	12901	5/16" FLAT WASHER
17	1	12902A	3/16" SQ. X 5/8" KEY
18	1	12910	DECAL (N/S)
19	1	A204	AS568A -204 O-RING, EPDM, BLACK
20	1	E5HE	5.5 HP HONDA, ELEC. START
21	1	M12712	2" FP MNFLD PUMP BODY ASSY
21-1	2	12777	1/2" DRAIN PLUG
21-2	1	M12712Y	2" FP MNFLD PUMP BODY ASSY
21-3	2	UV15163	#114 O'RING, EPDM
22	10	V07018	1/4" LOCKWASHER
23	10	V07019	1/4-20 HEX NUT





BANJO CORPORATION

150 BANJO DRIVE, CRAWFORDSVILLE, IN 47933
 WEB SITE: WWW.BANJOCORP.COM
 E-MAIL: BANJOSALES@IDEXCORP.COM

<p>THIS DRAWING AND ALL INFORMATION CONTAINED THEREON ARE THE EXCLUSIVE PROPERTY OF BANJO CORPORATION.</p> <p>UNLESS SPECIFICALLY NOTED, THIS DRAWING AND ITEMS SHOWN ON THIS DRAWING ARE SUBJECT TO CHANGE AT ANY TIME.</p>	<p>DESCRIPTION 2" POLY PUMP W/ 5.5 HP HONDA, ELEC. START</p> <p>PART NUMBER M220PH5E</p>
--	---

A

A

B

B

4

3

2

1

4

3

2

1