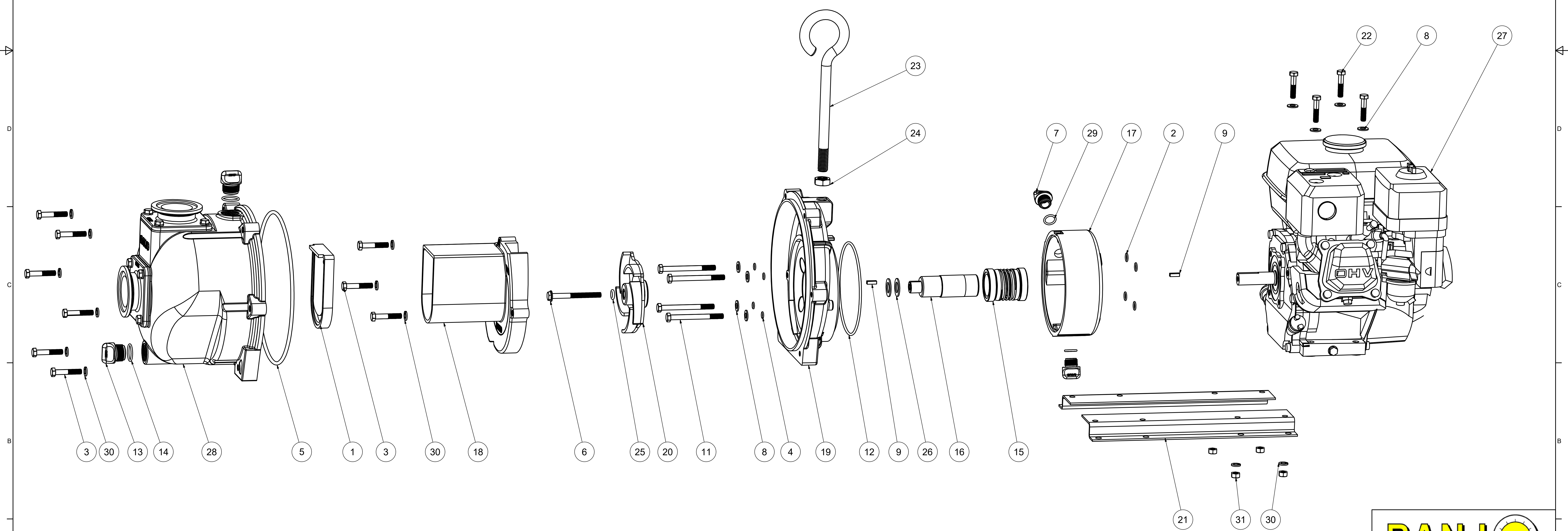


Parts List			
ITEM	QTY	PART NUMBER	DESCRIPTION
1	1	12705	PUMP CHECKVALVE, EPDM
2	4	12709	#13 O-RING, EPDM
3	9	12715A	5/16-24 X 1 3/4" HHCS WITH TORQ-PATCH
4	4	12717	#11 O-RING, EPDM
5	1	12719A	#375 O-RING, EPDM
6	1	12766	5/16-24 X 3 1/4" HFS
7	2	12777	1/2" DRAIN PLUG
8	8	12901	5/16" FLAT WASHER
9	2	12902A	3/16" SQ. X 5/8" KEY
10	1	12910	DECAL (N/S)
11	4	13034	5/16-24 X 3 1/2" HHCS
12	1	13719	#256 O-RING, EPDM
13	2	13777	3/4" DRAIN PLUG
14	2	13778	#119 O-RING, EPDM
15	1	15035E	MECH. SEAL ASSY, EPDM
16	1	15055	ADAPTER SHAFT
17	1	15201W	2" WET SEAL RESERVOIR
18	1	15702	2" CI PUMP VOLUTE
19	1	15703W	REAR BRACKET
20	1	15772	5 VANE IMPELLER
21	1	17033	Z-RAIL (PAIR)
22	4	17034	5/16-18 X 1-1/2" HHCS
23	1	18033	PUMP HANDLE
24	1	18034	5/8-11 JAM NUT
25	1	A204	#204 O-RING, EPDM
26	2	CV10175	GASKET, EPDM
27	1	E6H	6.5 HP HONDA
32	1	KK-57	WET SEAL WARNING TAG (N/S)
28	1	M15712P	2" CI PUMP BODY ASSY
29	2	UV15163	#114 O-RING, EPDM
30	13	V10118	5/16" LOCKWASHER
31	4	V10119	5/16" HEX NUT



THIS DRAWING AND ALL INFORMATION CONTAINED THEREON ARE THE EXCLUSIVE PROPERTY OF BANJO CORPORATION.

BANJO CORPORATION
 150 BANJO DRIVE, CRAWFORDSVILLE, IN 47933
 WEB SITE: WWW.BANJOCORP.COM
 E-MAIL: SALES1@BANJOCORP.COM

UNLESS SPECIFICALLY NOTED, THIS DRAWING AND ITEMS SHOWN ON THIS DRAWING ARE SUBJECT TO CHANGE AT ANY TIME.

DESCRIPTION
2" MNFLD CI W/S PUMP
 PART NUMBER
M222PIH6W